

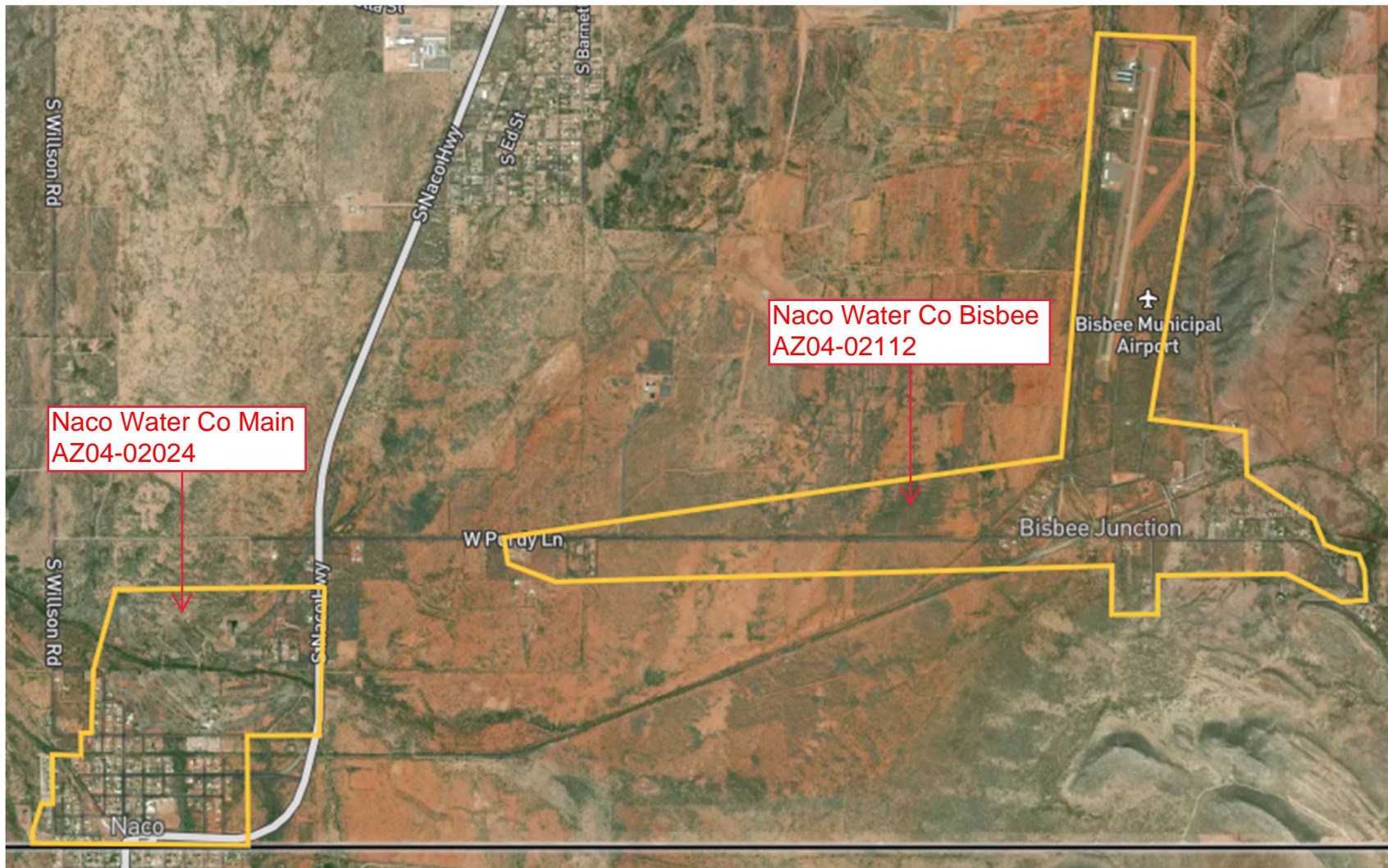
# Naco Water Company

## 2023 Consumer Confidence Report (CCR)

Naco Water Company is comprised of two public water systems.

This map outlines the system boundaries for those two systems.

Please refer to the following CCR for your respective system.





## Consumer Confidence Report for Calendar Year 2023

Este informe contiene información muy importante sobre el agua usted bebe.  
Tradúscalo ó hable con alguien que lo entienda bien.

Public Water System ID Number		Public Water System Name	
AZ04-02024		Naco Water Co Main	
Contact Name and Title		Phone Number	E-mail Address
Josh Uhland Operations Manager		520-699-4101	juhland@hearthstonecompany.com
We want our valued customers to be informed about their water quality. If you would like to learn more, please visit our website at <a href="http://hearthstonewater.com">hearthstonewater.com</a> .			

### Drinking Water Sources

The sources of drinking water (both tap and bottled water) include rivers, lakes, streams, ponds, reservoirs, springs, and wells. As water travels over the surface of the land or through the ground, it dissolves naturally occurring minerals, and in some cases, radioactive material, and can pick up substances resulting from the presence of animals or from human activity.

In order to ensure that tap water is safe to drink, EPA prescribes regulations which limit the amount of certain contaminants in water provided by public water systems. Food and Drug Administration (FDA) regulations establish limits for contaminants in bottled water which must provide the same protection for public health.

**Our water source(s):** Two wells that draw from the Upper San Pedro Basin

### Drinking Water Contaminants

**Microbial Contaminants:** Such as viruses and bacteria that may come from sewage treatment plants, septic systems, agricultural livestock operations, and wildlife

**Inorganic Contaminants:** Such as salts and metals that can be naturally occurring or result from urban stormwater runoff, industrial or domestic wastewater discharges, oil and gas production, mining, or farming

**Pesticides and Herbicides:** Such as agriculture, urban storm water runoff, and residential uses that may come from a variety of sources

**Organic Chemical Contaminants:** Such as synthetic and volatile organic chemicals, which are by-products of industrial processes and petroleum production, and may come from gas stations, urban storm water runoff, and septic systems.

**Radioactive Contaminants:** That can be naturally occurring or be the result of oil and gas production and mining activities.

### Vulnerable Population

Drinking water, including bottled water, may reasonably be expected to contain at least small amounts of some contaminants. The presence of contaminants does not necessarily indicate that water poses a health risk. Some people may be more vulnerable to contaminants in drinking water than the general population.

Immuno-compromised persons such as persons with cancer undergoing chemotherapy, persons who have undergone organ transplants, people with HIV-AIDS or other immune system disorders, some elderly, and infants can be particularly at risk from infections. These people should seek advice about drinking water from their health care providers.

For more information about contaminants and potential health effects, or to receive a copy of the U.S. Environmental Protection Agency (EPA) and the U.S. Centers for Disease Control (CDC) guidelines on appropriate means to lessen the risk of infection by *Cryptosporidium* and microbiological contaminants call the EPA *Safe Drinking Water Hotline* at 1-800-426-4791.

## Source Water Assessment

Based on the information currently available on the hydrogeologic settings and the adjacent land uses that are in the specified proximity of the drinking water source(s) of this public water system, the Arizona Department of Environmental Quality (ADEQ) has given a high-risk designation for the degree to which this public water system drinking water source(s) are protected. A designation of high risk indicates there may be additional source water protection measures which can be implemented on the local level. This does not imply that the source water is contaminated, nor does it mean that contamination is imminent. Rather, it simply states that land use activities or hydrogeologic conditions exist that make the source water susceptible to possible future contamination.

Further source water assessment documentation can be obtained by contacting ADEQ.

## Definitions

**Treatment Technique (TT):** A required process intended to reduce the level of a contaminant in drinking water

**Level 1 Assessment:** A study of the water system to identify potential problems and determine (if possible) why total coliform bacteria was present

**Level 2 Assessment:** A very detailed study of the water system to identify potential problems and determine (if possible) why an *E. coli* MCL violation has occurred and/or why total coliform bacteria was present

**Action Level (AL):** The concentration of a contaminant which, if exceeded, triggers treatment, or other requirements

**Maximum Contaminant Level (MCL):** The highest level of a contaminant that is allowed in drinking water

**Maximum Contaminant Level Goal MCLG):** The level of a contaminant in drinking water below which there is no known or expected risk to health

**Maximum Residual Disinfectant Level (MRDL):** The level of disinfectant added for water treatment that may not be exceeded at the consumer's tap

**Maximum Residual Disinfectant Level Goal (MRDLG):** The level of disinfectant added for treatment at which no known or anticipated adverse effect on health of persons would occur

**Minimum Reporting Limit (MRL):** The smallest measured concentration of a substance that can be reliably measured by a given analytical method

**Millirems per year (MREM):** A measure of radiation absorbed by the body

**Not Applicable (NA):** Sampling was not completed by regulation or was not required

**Not Detected (ND or <):** Not detectable at reporting limit

**Nephelometric Turbidity Units (NTU):** A measure of water clarity

**Million fibers per liter (MFL)**

**Picocuries per liter (pCi/L):** Measure of the radioactivity in water

**ppm:** Parts per million or Milligrams per liter (mg/L)

**ppb:** Parts per billion or Micrograms per liter ( $\mu\text{g/L}$ )

**ppt:** Parts per trillion or Nanograms per liter (ng/L)

**ppq:** Parts per quadrillion or Picograms per liter (pg/L)  
ppm x 1000 = ppb

ppb x 1000 = ppt

ppt x 1000 = ppq

## Lead Informational Statement:

Lead, in drinking water, is primarily from materials and components associated with service lines and home plumbing. If present, elevated levels of lead can cause serious health problems, especially for pregnant women and young children.

**Naco Water Co Main** is responsible for providing high quality drinking water but cannot control the variety of materials used in plumbing components. When your water has been sitting for several hours, you can minimize the potential for lead exposure by flushing your tap for 30 seconds to 2 minutes before using water for drinking or cooking. Information on lead in drinking water, testing methods, and steps you can take to minimize exposure is available from the Safe Drinking Water Hotline or at [www.epa.gov/safewater/lead](http://www.epa.gov/safewater/lead).

## Water Quality Data – Regulated Contaminants

Microbiological (RTCR)	TT Violation Y or N	Number of Positive Samples	Positive Sample(s) Month & Year	MCL	MCLG	Likely Source of Contamination	
E. Coli	N	0	N/A	0	0	Human and animal fecal waste	
Fecal Indicator (coliphage, enterococci and/or E. coli)	N	0	N/A	0	0	Human and animal fecal waste	
Disinfectants	MCL Violation Y or N	Running Annual Average (RAA)	Range of All Samples (Low-High)	MRDL	MRDLG	Sample Month & Year	Likely Source of Contamination
Chlorine/Chloramine (ppm)	N	1	1 - 1	4	4	2023	Water additive used to control microbes
Disinfection By-Products	MCL Violation Y or N	Running Annual Average (RAA) OR Highest Level Detected	Range of All Samples (Low-High)	MCL	MCLG	Sample Month & Year	Likely Source of Contamination
Total Trihalomethanes (TTHM) (ppb)	N	1	0 – 1.7	80	N/A	2023	Byproduct of drinking water disinfection
Lead & Copper	MCL Violation Y or N	90 <sup>th</sup> Percentile	Number of Samples Exceeds AL	AL	ALG	Sample Month & Year	Likely Source of Contamination
Copper (ppm)	N	0.065	0	1.3	1.3	Aug 2022	Corrosion of household plumbing systems; erosion of natural deposits
Radionuclides	MCL Violation Y or N	Running Annual Average (RAA) OR Highest Level Detected	Range of All Samples (Low-High)	MCL	MCLG	Sample Month & Year	Likely Source of Contamination
Alpha Emitters (pCi/L)	N	3.6	3.1 – 3.6	15	0	May 2022	Erosion of natural deposits
Inorganic Chemicals (IOC)	MCL Violation Y or N	Running Annual Average (RAA) OR Highest Level Detected	Range of All Samples (Low-High)	MCL	MCLG	Sample Month & Year	Likely Source of Contamination
Arsenic <sup>1</sup> (ppb)	N	2.2	2.2 – 2.2	10	0	May 2022	Erosion of natural deposits, runoff from orchards, runoff from glass and electronics production wastes
Barium (ppm)	N	0.39	0.39 – 0.39	2	2	May 2022	Discharge of drilling wastes; discharge from metal refineries; Erosion of natural deposits
Fluoride (ppm)	N	0.18	0.18 – 0.18	4	4	May 2022	Erosion of natural deposits; water additive which promotes strong teeth; discharge from fertilizer and aluminum factories
Nitrate <sup>2</sup> (ppm)	N	2	2.1 – 2.2	10	10	July 2023	Runoff from fertilizer use; leaching from septic tanks, sewage; erosion of natural deposits

<sup>1</sup> **Arsenic** is a mineral known to cause cancer in humans at high concentration and is linked to other health effects, such as skin damage and circulatory problems. If arsenic is less than or equal to the MCL, your drinking water meets EPA's standards. EPA's standard balances the current understanding of arsenic's possible health effects against the costs of removing arsenic from drinking water and continues to research the health effects of low levels of arsenic.

<sup>2</sup> **Nitrate** in drinking water at levels above 10 ppm is a health risk for infants of less than six months of age. High nitrate levels in drinking water can cause "blue baby syndrome." Nitrate levels may rise quickly for short periods of time because of rainfall or agricultural activity. If you are caring for an infant, and detected nitrate levels are above 5 ppm, you should ask advice from your health care provider.

## Water Quality Table – Unregulated Contaminants

Your drinking water was sampled for the presence and concentration of 29 different per- and polyfluoroalkyl substances, some known by the acronyms PFAS, PFOA, PFNA, PFHxS, PFBS, and GenX, a group of contaminants in the final stages of becoming regulated by the EPA. PFAS are man-made chemicals that are resistant to heat, water, and oil. They have been used since the 1940s to manufacture various consumer products, including fire-fighting foam and stain resistant, water-resistant, and nonstick items. Many PFAS do not break down easily and can build up in people, animals, and the environment over time. Scientific studies have shown that exposure to certain PFAS can be harmful to people and animals, depending on the level and duration of [exposure](#).

To learn more about this group of chemicals, we encourage you to read the ADEQ-provided “PFAS 101 Fact Sheet” and to visit the ADEQ website at <https://www.azdeq.gov/pfas-resources>

\* EPA is proposing a Hazard Index MCL to limit any mixture containing one or more of PFNA, PFHxS, PFBS, and/or GenX Chemicals. The Hazard Index considers the different toxicities of PFNA, GenX Chemicals, PFHxS, and PFBS. For these PFAS, water systems would use a hazard index calculation to determine if the combined levels of these PFAS in the drinking water at that system pose a potential risk and require action (Source: EPA Fact Sheet: Understanding the PFAS National Primary Drinking Water Proposal Hazard Index).

The following contaminants were tested for in June, 2023 and **were not detected in the water:**

11-chloroeicosafuoro-3-oxaundecane-1-sulfonic acid (11Cl-PF3OUdS), 1H, 1H, 2H, 2H-perfluorodecane sulfonic acid (8:2 FTS),  
 1H, 1H, 2H, 2H-perfluorohexane sulfonic acid (4:2 FTS), 1H, 1H, 2H, 2H-perfluorooctane sulfonic acid (6:2 FTS),  
 4,8-dioxa-3H-perfluorononanoic acid (ADONA), 9-chlorohexadecafluoro-3-oxanone-1-sulfonic acid (9Cl-PF3ONS),  
 hexafluoropropylene oxide dimer acid (HFPO-DA) (GenX), nonafluoro-3,6-dioxaheptanoic acid (NFDHA),  
 Perfluoro-3-methoxypropanoic acid (PFMPA), Perfluoro-4-methoxybutanoic acid (PFMBA),  
 Perfluorobutanesulfonic acid (PFBS), Perfluorobutanoic acid (PFBA), Perfluorodecanoic acid (PFDA),  
 Perfluorododecanoic acid (PFDoA), Perfluoroheptanesulfonic acid (PFHpS), Perfluoroheptanoic acid (PFHpA),  
 Perfluorohexanesulfonic acid (PFHxS), Perfluorohexanoic acid (PFHxA), Perfluorononanoic acid (PFNA),  
 Perfluorooctanesulfonic acid (PFOS), Perfluorooctanoic acid (PFOA), Perfluoropentanesulfonic acid (PFPeS),  
 Perfluoropentanoic acid (PFPeA), Perfluoroundecanoic acid (PFUnA), n-ethyl perfluorooctanesulfonamidoacetic acid (NEtFOSAA),  
 n-methyl perfluorooctanesulfonamidoacetic acid (NMeFOSAA), Perfluorotetradecanoic acid (PFTA) and  
 Perfluorotridecanoic acid (PFTTrDA).

### Violation Summary (for MCL, MRDL, AL, TT, or Monitoring & Reporting Requirement)

Violation Type	Explanation, Health Effects	Time Period	Corrective Actions
Lead Consumer Notice (LCR)	We failed to provide the results of lead tap water monitoring to the consumers at the location water was tested. These were supposed to be provided no later than 30 days after learning the results. Late reporting - No health effects	1/1/2023 – 2/14/2023	System was returned to compliance when LCN was submitted to customers.

Please share this information with other people who drink this water, especially those who may not have received this notice directly (for example, people in apartments, nursing homes, schools, and businesses). You can do this by posting this notice in a public place or distributing copies by hand or mail.



## Consumer Confidence Report for Calendar Year 2023

Este informe contiene información muy importante sobre el agua usted bebe.  
Tradúscalo ó hable con alguien que lo entienda bien.

Public Water System ID Number		Public Water System Name	
AZ04-02112		Naco Water Co Bisbee	
Contact Name and Title		Phone Number	E-mail Address
Josh Uhland Operations Manager		520-699-4101	juhland@hearthstonecompany.com
We want our valued customers to be informed about their water quality. If you would like to learn more, please visit our website at <a href="http://hearthstonewater.com">hearthstonewater.com</a> .			

### Drinking Water Sources

The sources of drinking water (both tap and bottled water) include rivers, lakes, streams, ponds, reservoirs, springs, and wells. As water travels over the surface of the land or through the ground, it dissolves naturally occurring minerals, and in some cases, radioactive material, and can pick up substances resulting from the presence of animals or from human activity.

In order to ensure that tap water is safe to drink, EPA prescribes regulations which limit the amount of certain contaminants in water provided by public water systems. Food and Drug Administration (FDA) regulations establish limits for contaminants in bottled water which must provide the same protection for public health.

**Our water source(s):** One well that draws from the Upper San Pedro Basin

### Drinking Water Contaminants

**Microbial Contaminants:** Such as viruses and bacteria that may come from sewage treatment plants, septic systems, agricultural livestock operations, and wildlife

**Inorganic Contaminants:** Such as salts and metals that can be naturally occurring or result from urban stormwater runoff, industrial or domestic wastewater discharges, oil and gas production, mining, or farming

**Pesticides and Herbicides:** Such as agriculture, urban storm water runoff, and residential uses that may come from a variety of sources

**Organic Chemical Contaminants:** Such as synthetic and volatile organic chemicals, which are by-products of industrial processes and petroleum production, and may come from gas stations, urban storm water runoff, and septic systems.

**Radioactive Contaminants:** That can be naturally occurring or be the result of oil and gas production and mining activities.

### Vulnerable Population

Drinking water, including bottled water, may reasonably be expected to contain at least small amounts of some contaminants. The presence of contaminants does not necessarily indicate that water poses a health risk. Some people may be more vulnerable to contaminants in drinking water than the general population.

Immuno-compromised persons such as persons with cancer undergoing chemotherapy, persons who have undergone organ transplants, people with HIV-AIDS or other immune system disorders, some elderly, and infants can be particularly at risk from infections. These people should seek advice about drinking water from their health care providers.

For more information about contaminants and potential health effects, or to receive a copy of the U.S. Environmental Protection Agency (EPA) and the U.S. Centers for Disease Control (CDC) guidelines on appropriate means to lessen the risk of infection by *Cryptosporidium* and microbiological contaminants call the EPA *Safe Drinking Water Hotline* at 1-800-426-4791.

## Source Water Assessment

Based on the information currently available on the hydrogeologic settings of and the adjacent land uses that are in the specified proximity of the drinking water source(s) of this public water system, the department has given a low-risk designation for the degree to which this public water system drinking water source(s) are protected. A low-risk designation indicates that most source water protection measures are either already implemented, or the hydrogeology is such that the source water protection measures will have little impact on protection. Further source water assessment documentation can be obtained by contacting ADEQ.

## Definitions

**Treatment Technique (TT):** A required process intended to reduce the level of a contaminant in drinking water

**Level 1 Assessment:** A study of the water system to identify potential problems and determine (if possible) why total coliform bacteria was present

**Level 2 Assessment:** A very detailed study of the water system to identify potential problems and determine (if possible) why an *E. coli* MCL violation has occurred and/or why total coliform bacteria was present

**Action Level (AL):** The concentration of a contaminant which, if exceeded, triggers treatment, or other requirements

**Maximum Contaminant Level (MCL):** The highest level of a contaminant that is allowed in drinking water

**Maximum Contaminant Level Goal MCLG):** The level of a contaminant in drinking water below which there is no known or expected risk to health

**Maximum Residual Disinfectant Level (MRDL):** The level of disinfectant added for water treatment that may not be exceeded at the consumer's tap

**Maximum Residual Disinfectant Level Goal (MRDLG):** The level of disinfectant added for treatment at which no known or anticipated adverse effect on health of persons would occur

**Minimum Reporting Limit (MRL):** The smallest measured concentration of a substance that can be reliably measured by a given analytical method

**Millirems per year (MREM):** A measure of radiation absorbed by the body

**Not Applicable (NA):** Sampling was not completed by regulation or was not required

**Not Detected (ND or <):** Not detectable at reporting limit

**Nephelometric Turbidity Units (NTU):** A measure of water clarity

**Million fibers per liter (MFL)**

**Picocuries per liter (pCi/L):** Measure of the radioactivity in water

**ppm:** Parts per million or Milligrams per liter (mg/L)

**ppb:** Parts per billion or Micrograms per liter ( $\mu\text{g/L}$ )

**ppt:** Parts per trillion or Nanograms per liter (ng/L)

**ppq:** Parts per quadrillion or Picograms per liter (pg/L)  
ppm x 1000 = ppb

ppb x 1000 = ppt

ppt x 1000 = ppq

## Lead Informational Statement:

Lead, in drinking water, is primarily from materials and components associated with service lines and home plumbing. If present, elevated levels of lead can cause serious health problems, especially for pregnant women and young children. **Naco Water Co Bisbee** is responsible for providing high quality drinking water but cannot control the variety of materials used in plumbing components. When your water has been sitting for several hours, you can minimize the potential for lead exposure by flushing your tap for 30 seconds to 2 minutes before using water for drinking or cooking. Information on lead in drinking water, testing methods, and steps you can take to minimize exposure is available from the Safe Drinking Water Hotline or at [www.epa.gov/safewater/lead](http://www.epa.gov/safewater/lead).

## Water Quality Data – Regulated Contaminants

Microbiological (RTCR)	TT Violation Y or N	Number of Positive Samples	Positive Sample(s) Month & Year	MCL	MCLG	Likely Source of Contamination	
E. Coli	N	0	N/A	0	0	Human and animal fecal waste	
Fecal Indicator (coliphage, enterococci and/or E. Coli)	N	0	N/A	0	0	Human and animal fecal waste	
Coliform Bacteria	N	1	Aug 2023	0	0	Naturally present in the environment	
Disinfectants	MCL Violation Y or N	Running Annual Average (RAA)	Range of All Samples (Low-High)	MRDL	MRDLG	Sample Month & Year	Likely Source of Contamination
Chlorine/Chloramine (ppm)	N	1	1 – 1	4	4	2023	Water additive used to control microbes
Disinfection By-Products	MCL Violation Y or N	Running Annual Average (RAA) OR Highest Level Detected	Range of All Samples (Low-High)	MCL	MCLG	Sample Month & Year	Likely Source of Contamination
Total Trihalomethanes (TTHM) (ppb)	N	1	0.6 – 1.8	80	N/A	2023	Byproduct of drinking water disinfection
Lead & Copper	MCL Violation Y or N	90 <sup>th</sup> Percentile	Number of Samples Exceeds AL	AL	ALG	Sample Month & Year	Likely Source of Contamination
Copper (ppm)	N	0.063	0	1.3	1.3	June 2023	Corrosion of household plumbing systems; erosion of natural deposits
Lead (ppb)	N	2.5	0	15	0	June 2023	Corrosion of household plumbing systems; erosion of natural deposits
Radionuclides	MCL Violation Y or N	Running Annual Average (RAA) OR Highest Level Detected	Range of All Samples (Low-High)	MCL	MCLG	Sample Month & Year	Likely Source of Contamination
Alpha Emitters (pCi/L)	N	7.2	7.2 – 7.2	15	0	Dec 2019	Erosion of natural deposits
Inorganic Chemicals (IOC)	MCL Violation Y or N	Running Annual Average (RAA) OR Highest Level Detected	Range of All Samples (Low-High)	MCL	MCLG	Sample Month & Year	Likely Source of Contamination
Arsenic <sup>1</sup> (ppb)	N	3.9	3.9 – 3.9	10	0	May 2022	Erosion of natural deposits, runoff from orchards, runoff from glass and electronics production wastes
Barium (ppm)	N	0.22	0.22 – 0.22	2	2	May 2022	Discharge of drilling wastes; discharge from metal refineries; Erosion of natural deposits
Fluoride (ppm)	N	0.25	0.25 – 0.25	4	4	May 2022	Erosion of natural deposits; water additive which promotes strong teeth; discharge from fertilizer and aluminum factories
Nitrate <sup>2</sup> (ppm)	N	5	5.4 – 5.4	10	10	July 2023	Runoff from fertilizer use; leaching from septic tanks, sewage; erosion of natural deposits

<sup>1</sup> **Arsenic** is a mineral known to cause cancer in humans at high concentration and is linked to other health effects, such as skin damage and circulatory problems. If arsenic is less than or equal to the MCL, your drinking water meets EPA's standards. EPA's standard balances the current understanding of arsenic's possible health effects against the costs of removing arsenic from drinking water and continues to research the health effects of low levels of arsenic.

<sup>2</sup> **Nitrate** in drinking water at levels above 10 ppm is a health risk for infants of less than six months of age. High nitrate levels in drinking water can cause "blue baby syndrome." Nitrate levels may rise quickly for short periods of time because of rainfall or agricultural activity. If you are caring for an infant, and detected nitrate levels are above 5 ppm, you should ask advice from your health care provider.



## Water Quality Table – Unregulated Contaminants

Your drinking water was sampled for the presence and concentration of 29 different per- and polyfluoroalkyl substances, some known by the acronyms PFAS, PFOA, PFNA, PFHxS, PFBS, and GenX, a group of contaminants in the final stages of becoming regulated by the EPA. PFAS are man-made chemicals that are resistant to heat, water, and oil. They have been used since the 1940s to manufacture various consumer products, including fire-fighting foam and stain resistant, water-resistant, and nonstick items. Many PFAS do not break down easily and can build up in people, animals, and the environment over time. Scientific studies have shown that exposure to certain PFAS can be harmful to people and animals, depending on the level and duration of [exposure](#).

To learn more about this group of chemicals, we encourage you to read the ADEQ-provided “PFAS 101 Fact Sheet” and to visit the ADEQ website at <https://www.azdeq.gov/pfas-resources>

\* EPA is proposing a Hazard Index MCL to limit any mixture containing one or more of PFNA, PFHxS, PFBS, and/or GenX Chemicals. The Hazard Index considers the different toxicities of PFNA, GenX Chemicals, PFHxS, and PFBS. For these PFAS, water systems would use a hazard index calculation to determine if the combined levels of these PFAS in the drinking water at that system pose a potential risk and require action (Source: EPA Fact Sheet: Understanding the PFAS National Primary Drinking Water Proposal Hazard Index).

The following contaminants were tested for in June, 2023 and **were not detected in the water:**

11-chloroeicosafuoro-3-oxaundecane-1-sulfonic acid (11Cl-PF3OUdS), 1H, 1H, 2H, 2H-perfluorodecane sulfonic acid (8:2 FTS),  
 1H, 1H, 2H, 2H-perfluorohexane sulfonic acid (4:2 FTS), 1H, 1H, 2H, 2H-perfluorooctane sulfonic acid (6:2 FTS),  
 4,8-dioxa-3H-perfluorononanoic acid (ADONA), 9-chlorohexadecafluoro-3-oxanone-1-sulfonic acid (9Cl-PF3ONS),  
 hexafluoropropylene oxide dimer acid (HFPO-DA) (GenX), nonafluoro-3,6-dioxaheptanoic acid (NFDHA),  
 Perfluoro-3-methoxypropanoic acid (PFMPA), Perfluoro-4-methoxybutanoic acid (PFMBA),  
 Perfluorobutanesulfonic acid (PFBS), Perfluorobutanoic acid (PFBA), Perfluorodecanoic acid (PFDA),  
 Perfluorododecanoic acid (PFDoA), Perfluoroheptanesulfonic acid (PFHpS), Perfluoroheptanoic acid (PFHpA),  
 Perfluorohexanesulfonic acid (PFHxS), Perfluorohexanoic acid (PFHxA), Perfluorononanoic acid (PFNA),  
 Perfluorooctanesulfonic acid (PFOS), Perfluorooctanoic acid (PFOA), Perfluoropentanesulfonic acid (PFPeS),  
 Perfluoropentanoic acid (PFPeA), Perfluoroundecanoic acid (PFUnA), n-ethyl perfluorooctanesulfonamidoacetic acid (NEtFOSAA),  
 n-methyl perfluorooctanesulfonamidoacetic acid (NMeFOSAA), Perfluorotetradecanoic acid (PFTA) and  
 Perfluorotridecanoic acid (PFTTrDA).

### Violation Summary (for MCL, MRDL, AL, TT, or Monitoring & Reporting Requirement)

Violation Type	Explanation, Health Effects	Time Period	Corrective Actions
Lead Consumer Notice (LCR)	We failed to provide the results of lead tap water monitoring to the consumers at the location water was tested. These were supposed to be provided no later than 30 days after learning the results. Late reporting - No health effects	1/1/2023 – 2/14/2023	System was returned to compliance when LCN was submitted to customers.
Please share this information with other people who drink this water, especially those who may not have received this notice directly (for example, people in apartments, nursing homes, schools, and businesses). You can do this by posting this notice in a public place or distributing copies by hand or mail.			